

For Lease

Tribute Road Location

1796 Tribute Road, Suite 200
Sacramento, CA



For Lease by Owner
BonaFide, LLC

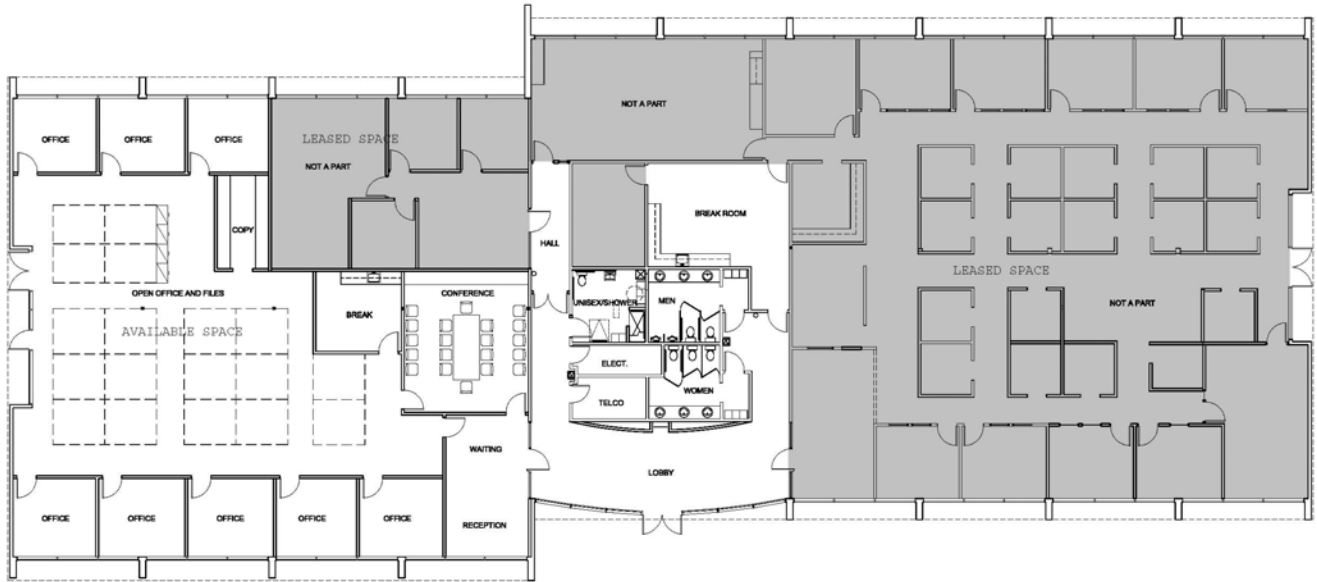
Contact: Eric Johnson
(916) 641-5600
1796 Tribute Road
Suite 100
Sacramento, CA 95815

Email: ecj@ecomeng.com

Building Features:

- ± 5,304 Square Feet Available (Divisible)
- Attractive Single-Story Office Building
- Beautiful remodeled lobby, shower and common areas
- Easy Freeway access to Downtown Sacramento
- Within 1 mile of Costco, REI and several hotels
- Lease Rate: \$ 1.55, Full Service
- Proposed Floorplan on back

THE ABOVE INFORMATION WHILE NOT GUARANTEED HAS BEEN SECURED FROM SOURCES WE DEEM RELIABLE, HOWEVER NO WARRANTY OR REPRESENTATION, EXPRESS OR IMPLIED, IS MADE AS TO THE ACCURACY OF THE INFORMATION CONTAINED HEREIN. ALL INFORMATION SHOULD BE VERIFIED BY THE RECIPIENT PRIOR TO PURCHASE OR EXECUTION OF LEGAL DOCUMENTS.



For Lease by Owner
BonaFide, LLC

Contact: Eric Johnson
 (916) 641-5600
 1796 Tribute Road
 Suite 100
 Sacramento, CA 95815

Email: ecj@ecomeng.com

